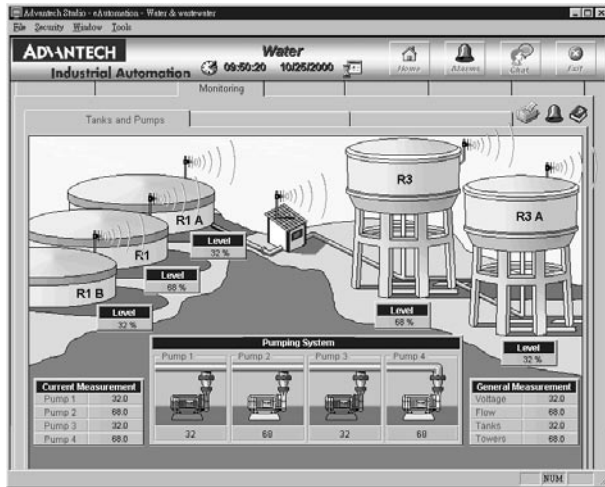


# Advantech Studio

Web-enabled HMI/  
SCADA Software



## Features

- Publish real-time dynamic and animated graphic screens, trends, alarms, reports, and recipes to standard browsers
- Import and export recipes, reports and real-time data using the XML format
- Use the same development environment as applications running on Windows® NT/2000/XP and CE or on the Web
- Integrates seamlessly with your Windows® desktop applications (such as Microsoft® Word and Excel)
- View multiple clients from one Web browser
- Multi-level security for applications, including use over Intranets and Internet.
- Conforms to industry standards such as Microsoft® DNA, OPC, DDE, ODBC, XML, and ActiveX

## Introduction

Advantech Studio is a powerful, integrated collection of automation tools that includes all the building blocks required to develop modern Human Machine Interfaces (HMIs), and Supervisory Control and Data Acquisition System (SCADA) applications that run on Windows® NT/2000/XP and CE, or in an Internet / Intranet environment. A simple drag and drop, point and click development environment simplifies the most complex behavior of your live processes, but a flexible and easy-to-use scripting language is also available for special requirements. Advantech Studio is currently being used in nearly 2,000 installations worldwide.

Advantech Studio for Windows® CE is based on Advantech Studio's full scale supervisory control and monitoring system, and has almost all of the same features, including an object-oriented database, math functions, report generation, archiving, alarms, batch recipes, and interfaces for PLCs, remote I/O and TCP/IP networking. In other words, Advantech Studio for Windows CE is a full-function supervisory control and monitoring system that fits in the palm of your hand or can be embedded in the chipset of a low-cost operator interface. Advantech Studio for Windows® CE is software for complete supervisory control and process monitoring with an operator interface that is available for the Microsoft Windows® CE operating system platform.

## System Requirements

	Product Series or Part Number	WebLink, WebOIT	AS1500-WS60	AS1500-WR60	AS1500-WD60	AS4000-WS60	AS64K-WS60	AS512K-WS60	AS1500-CD60	AS4000-CD60
<b>Type</b>	S/W scope	CE Runtime	Local Interface Server	Local Interface Runtime	Local Interface Development	Operator Workstation Server	Control Room Server	Advanced Server	Local Interface Development for CE Runtime	Operator Workstation Development for CE Runtime
<b>Overview</b>	Web Server	✓	✓	✓	✓	✓	✓	✓	✓	✓
	Development Tool OS	-	WinNT/2000/XP	-	WinNT/2000/XP	WinNT/2000/XP	WinNT/2000/XP	WinNT/2000/XP	WinNT/2000/XP	WinNT/2000/XP
	Runtime OS	WinCE	NT/2000/XP	NT/2000/XP	-	NT/2000/XP	NT/2000/XP	NT/2000/XP	-	-
	Local Viewer on Runtime	WebOIT only	✓	✓	-	✓	✓	✓	-	-
	Email Support	✓	✓	✓	✓	✓	✓	✓	✓	✓
<b>Database</b>	Modem Dial-up Support	✓	✓	✓	✓	✓	✓	✓	✓	✓
	Application Tags	up to 1,500	up to 1,500	up to 4,000	up to 1,500	up to 4,000	up to 64,000	up to 512,000	up to 1,500	up to 4,000
<b>Communication</b>	Security System	✓	✓	✓	✓	✓	✓	✓	✓	✓
	Drivers	up to 3	up to 3	up to 3	up to 3	up to 5	up to 8	up to 8	up to 3	up to 3
	OPC Client	✓	✓	✓	✓	✓	✓	✓	✓	✓
	OPC Server	✓	✓	✓	✓	✓	✓	✓	✓	✓
	TCP/IP Client	✓	✓	✓	✓	✓	✓	✓	✓	✓
TCP/IP Server	✓	✓	✓	✓	✓	✓	✓	✓	✓	
Legend										
<b>Supported</b>	✓									
<b>D</b>	Determined by development version									
<b>Server</b>	Includes Development and Runtime license									

## Specifications

- **Pre-built Servers** Web Server, FTP Server, Telnet Server, Remote Access Server (RAS)
- **HMI Functions**
  - 100+ built-in PLC drivers (up to 3 running simultaneously)
  - 8 simultaneous web clients
  - OPC Client and Server
  - Email (SMTP) Integration
  - Fully featured dynamic graphics with object library
  - Alarming, Trending, Reporting features
  - Scripting Language with 100+ standard functions
  - Recipes (ASCII and XML formats)
  - Remote project management including online editing
  - Multi-level security for use over Intranet and Internet

### Development Environment

- Microsoft® Windows® XP, 2000, NT 4.0 service pak 4 and higher
- Min. 256 MB of RAM. (Recommended 512 MB of RAM)
- 100 MB of free hard-disk space for installation
- CD-ROM driver (for installation only)

### Runtime Environment

- Windows® CE 4.2
  - Min. 32 MB of memory
- or
- Microsoft® Windows® 2000, Windows® XP, Windows® NT 4.0 Service Pack 4 and higher, Service Pack 2
  - Min. 32 MB of RAM. (Recommended 64 MB of RAM)
  - Web Browser that supports ActiveX objects

## Hardware Platforms Supported

- **WebOIT-60** 5.7" QVGA STN Web-enabled Operator Interface Terminal
- **WebOIT-1260** 12.1" SVGA TFT PII-grade Web-enabled Operator Interface Terminal
- **WebOIT-1560** 15" XGA TFT P-II grade Web-enabled Operator Interface Terminal
- **WebLink-2050** Pentium-grade Web-enabled Data Connection with Isolated DI/DO
- **WebLink-2053** Pentium-grade Web-enabled Data Connection with Dual LAN
- **WebLink-2059** Pentium-grade Web-enabled Data Connection with PC Card and 4 x RS-232/422/485
- **WebLink-2160** Pentium II-grade Web-enabled Data Connection with PC/104 extension

## Applications

- Remote Utility Management
- Building Automation
- Water and Wastewater Management
- Factory Automation
- Machine Builder

## Ordering Information

- **AS1500-WS60** AStudio Development Kit Professional Edition for Windows® XP/2000/NT (Include DEV and RT Edition)
- **AS1500-WR60** AStudio Runtime Edition for Windows® XP/2000/NT
- **AS1500-WD60** AStudio Development Kit for Windows® XP/2000/NT
- **AS4000-WS60** AStudio Workstation Professional Edition for Windows® XP/2000/NT
- **AS64K-WS60** AStudio Control Room Professional Edition for Windows® XP/2000/NT
- **AS512K-WS60** AStudio Advanced Server Professional Edition for Windows® XP/2000/NT
- **AS1500-CD60** AStudio Development Kit for Windows® CE
- **AS4000-CD60** AStudio Workstation Development Kit for Windows® CE

## Communication Drivers

<b>Advantech</b>	ADAM-4000, ADAM-5000/485
<b>AEG Schneider (Modicon Square D Telemecanique)</b>	AEG Compact PLC*, ModCon 984E*, Quantum Family
	ModCon 984E* Ethernet Quantum Ethernet Family
	MODBUS Plus compatible equipment
	Symax
<b>Allen-Bradley</b>	Family PLC2
	Family PLC5
	Family SLC500
	Family 5000
<b>Cutler-Hammer</b>	D50*, D300
<b>GE-Fanuc</b>	Series 90, 90/30 CPU 341*
<b>Mitsubishi</b>	FX-232AW
<b>Omron</b>	C-series Rack PCs
	Sysmac way
	Host link units
	Sysmac C200H*
	E5CK / E5AF
<b>Phoenix</b>	Interbus Compatible
	S5 (PG port)
<b>Siemens</b>	S5/S7 3964R, S7 (MPI)
	Profibus DP Slave Compatible
	Profibus DP Master Compatible
	Profibus FMS Compatible
	S5-945 PG Port
	MXT521
<b>Yokogawa</b>	UT35
	HR2500E
	DA100
	UT37/UT38
	UT750, UP750, UT550, UT520, UP550, UT350, UT320, UM350, UM330, UP350
	YS100
<b>InterBus</b>	-
<b>Modbus Ethernet</b>	-
<b>Modbus</b>	RTU/ASCII
<b>OPC</b>	-