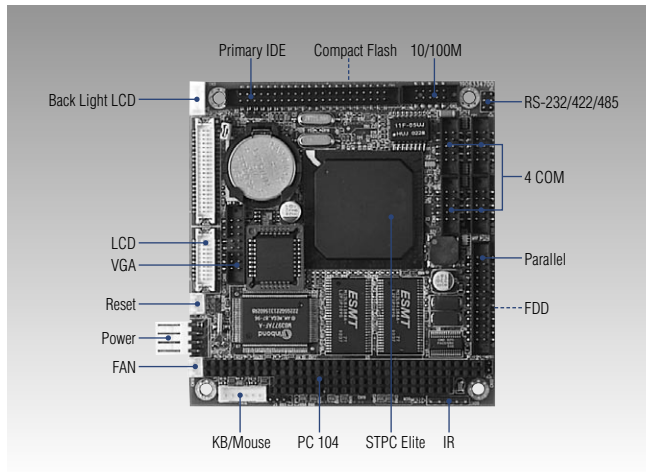


# PCM-3347

## STPC Elite II 133 MHz CPU Module with VGA/LCD, Ethernet & SSD



### Features

- Low Power STPC Elite II 133, Fanless
- Onboard 32 MB SDRAM (64 MB option)
- 4 COM ports
- Superior low power consumption requires no CPU cooling fan.
- 10/100Base-T Ethernet



### Specifications

#### General

- **CPU** Onboard STPC Elite/133 MHz
- **System Chipset** STPC Elite embedded
- **BIOS** AWARD 256 KB Flash BIOS
- **System Memory** Onboard SDRAM 32/64 (optional) MB memory
- **SSD** Supports CompactFlash Card
- **Watch Dog Timer** 1 - 62 Sec, System reset or IRQ11
- **Expansion Interface** 1 x PC/104
- **Battery** Lithium 3 V/196 mAH

#### I/O

- **I/O Interface** 1 x EIDE (44-pin Ultra DAM 33), 1 x K/B, 1 x mouse, 4 x RS-232, 1 x LPT
- **IrDA** 4 Mbps, IrDA 1.1 compliant

#### Ethernet

- **Chipset** Realtek RTL8100B
- **Speed** 10/100Base-T
- **Interface** RJ45
- **Standard** IEEE 802.3, IEEE802.3u

#### Display

- **Chipset** C&T 69000
- **Memory Size** 2MB Memory
- **Resolution** 1024 x 768 @ 16 bpp (CRT), 1024 x 768 @ 16 bpp (LCD)
- **LCD Interface** 36-bit TFT, DSTN

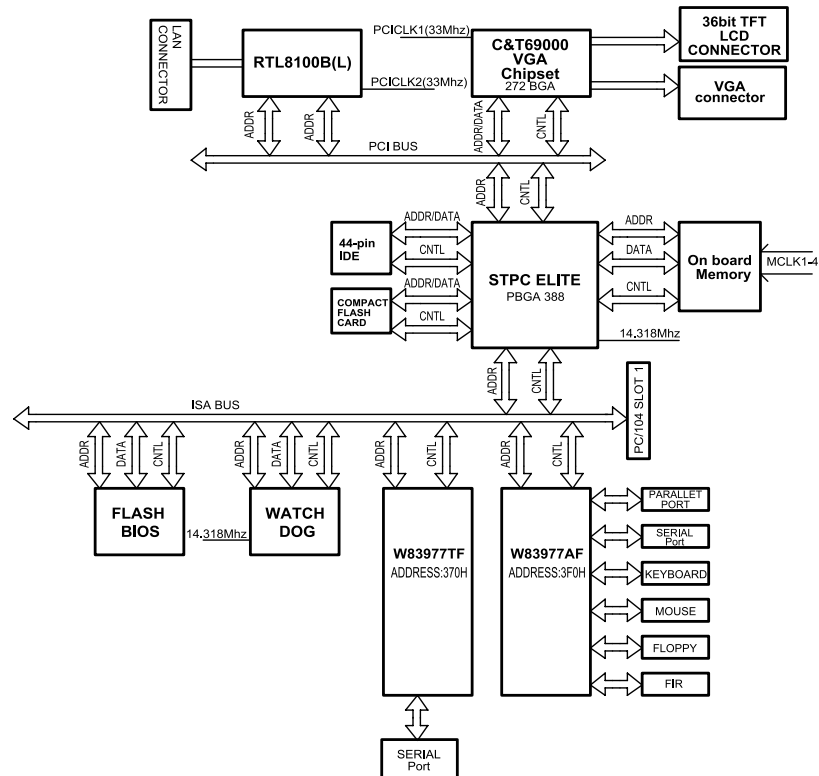
#### Mechanical and Environmental

- **Dimension (L x W)** 96 x 90 mm (3.8" x 3.5")
- **Weight** 0.103 kg (0.227 lb)
- **Operating Temperature** 0 - 60° C (32 - 140° F), operation
- **Operating Humidity** 0% - 90% relative humidity, non-condensing

#### Power

- **Power Supply Voltage** +5 V  $\pm$ 5 %
- **Power Consumption** Typical: 5 V @ 1.62  
Max: 5 V @ 2 A

## Board Diagram



## Packing List

- 1 x PCM-3347 SBC
- 1 x KB/Mouse Y-Cable EXT Cable (p/n:1703060053)
- 1 x KB/Mouse Y-Cable (2 PS2) (p/n:1700060202)
- 1 x FDD & LAN Adapter (p/n:1906334650)
- 1 x VGA Cable (p/n:1701160150)
- 1 x Ethernet RJ-45 Connector conversion cable (p/n:1701100202)
- 1 x IDE Cable (p/n:1701440350)
- 1 x FDD Cable (p/n:1701340700)
- 1 x COM Port Cable (p/n:1700090301)
- 3 x COM Port Cable (p/n:1700100250)
- 1 x LPT port cable (p/n:1700260250)
- 1 x Start up manual
- 1 x CD-ROM(Manual, Driver, Utility)

## Ordering Information

### Standard

- **PCM-3347F-00A1** Elite 133/32 MB PC/104 CPU Module with VGA/LCD/LAN/SSD/FDD
- **PCM-3347L-00A1** PCM-3347F without LAN
- **PCM-3347N-00A1** PCM-3347F without VGA/LCD
- **PCM-3347Z-00A1** PCM-3347F with Phoenix Gold Package (-20 ~ 80 ° C)

### Optional Accessories

- **FFC for Slim-FDD 12cm** (p/n:1906000001)