

PCM-3618

PCM-3640/3641

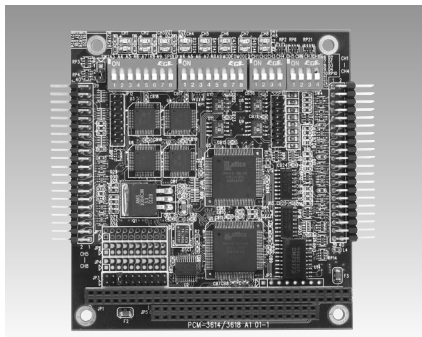
PCM-3680

8-port RS-422/485 High-Speed Module

4-port RS-232 High-Speed Module

Dual-port Isolated CAN Interface Module

1	IPPC & AWS
2	TPC
3	FPM
4	ATM
5	DA&C
6	ePCI
7	ADAM-3000
8	eConnectivity
9	ICOM
10	Software
11	UNO-2000/3000
12	VBOX
13	ADAM-4000
14	ADAM-5000
15	ADAM-6000
16	ADAM-8000



PCM-3618



Features

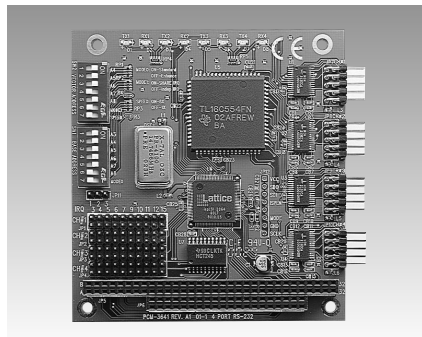
- Eight Independent RS-422/485 serial ports
- Automatic RS-485 data flow control
- Transmission speeds up to 921.6 Kbps
- Shared IRQ settings for each ports
- LED indicators: TX, RX

Specifications

- **Number of Ports** 8
- **I/O Address** 0 x 000 ~ 0 x 3F8
- **IRQ** 3, 4, 5, 6, 7, 9, 10, 11, 12, 15
- **Data Bits** 5, 6, 7, 8
- **Stop Bits** 1, 1.5, 2
- **Parity** None, even, odd
- **Speed (bps)** 50 ~ 921.6 K
- **Connectors** Eight male DB-9
- **RS-422 Signal Support** TxD+, TxD-, RxD+, RxD-, CTS+, CTS-, RTS+ and RTS-
- **RS-485 Signal Support** DATA+, DATA-, CTS+, CTS-
- **Surge Protection** 1000 V_{DC}
- **Built-in Termination Resistor** 120 Ω
- **Power Consumption** +5 V @ 650 mA
- **Operating Temperature** 0 ~ 65° C (IEC-68-1-1, 2) (32 ~ 149° F)
- **Storage Temperature** -25 ~ 80° C (-13 ~ 176° F)
- **Operating Humidity** 0 ~ 90% relative humidity, non-condensing

Ordering Information

- **PCM-3618-A** 8-port RS-422/485 High-Speed module



PCM-3640/3641



Features

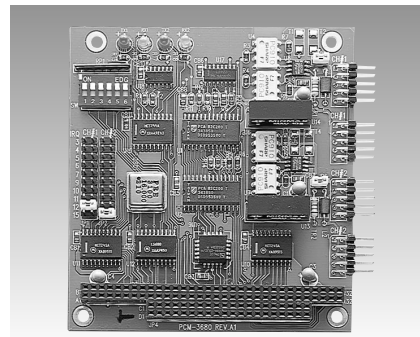
- Transmission speeds up to 460 Kbps (PCM-3641)
- Shared IRQ settings for each of 4 RS-232 ports (PCM-3641)
- Standard PC ports: COM1, COM2, COM3, COM4 compatible
- Supports Windows 95/98/NT/2000/ME/CE, Linux (ICOM utility)

Specifications

- **Number of Ports** 4
- **I/O Address** 0 x 0200 ~ 0 x 03F8
- **IRQ** 3, 4, 5, 6, 7, 9, 10, 11, 12, 15
- **Data Bits** 5, 6, 7, 8
- **Stop Bits** 1, 1.5, 2
- **Parity** None, even, odd
- **Speed (bps)** 50 ~ 460.3 K (PCM-3641)
50 ~ 115.2 K (PCM-3640)
- **Connectors** Four DB-9 male
- **Data Signals** TxD, RxD, RTS, CTS, DTR, DSR, DCD, RI, GND
- **Power Consumption** +5 V @ 200 mA (Typical); +5 V @ 250 mA (Max.)
- **Operating Temperature** 0 ~ 65° C (IEC-68-1-1, 2) (32 ~ 149° F)
- **Storage Temperature** -25 ~ 80° C (-13 ~ 176° F)
- **Operating Humidity** 0 ~ 90 % relative humidity, non-condensing

Ordering Information

- **PCM-3641-A** 4-port RS-232 High-Speed module
- **PCM-3640-A** 4-port RS-232 module



PCM-3680



Features

- Operates two separate CAN networks at the same time
- High speed transmission up to 1 Mbps
- Direct memory mapping enables very fast access to the CAN controllers
- C library and examples included
- DOS Library, Utility included

Specifications

- **Port** 2
- **CAN Controller** SIA-1000
- **CAN Transceiver** 82C250
- **Signal Support** CAN_H, CAN_L
- **Memory Segment Base Address** From C800H to EFO0H
- **IRQ** 3, 4, 5, 6, 7, 9, 10, 11, 12 or 15
- **Isolation Voltage** 1000 V_{DC}
- **Power Consumption** +5 V @ 400 mA
- **Connectors** Two DB-9 male connectors (cable included)
- **Operating Temperature** 0 ~ 65° C (32 ~ 122° F)
- **Dimensions** 90 x 96 mm (3.6" X 3.8")

Ordering Information

- **PCM-3680-A** Dual-port Isolated CAN Interface Module