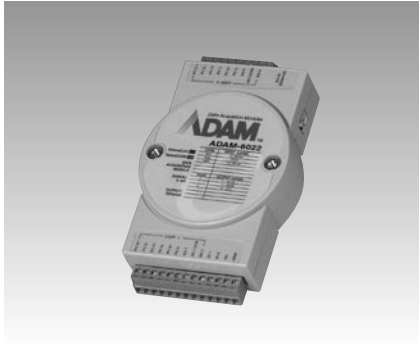


ADAM-6022

ADAM-6000

Ethernet-based Dual-loop PID Controller

Series Common Specifications



ADAM-6022

CE FCC

Specifications

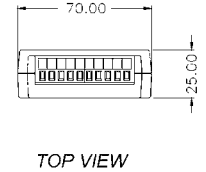
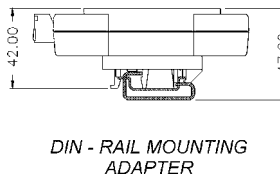
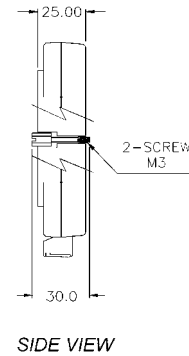
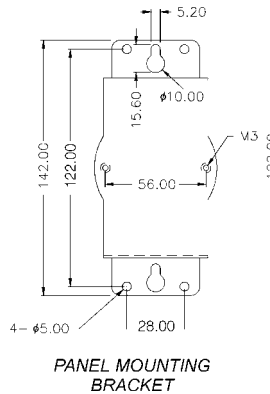
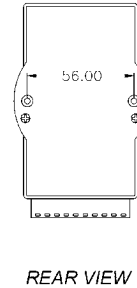
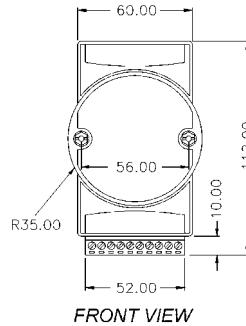
- **Loop Number** 2 (3 AI, 1 AO, 1 DI, 1 DO for each control loop)
- **Analog Input**
 - Channels 6 differential
 - Effective Resolution 16-bit
 - Input Range 0 ~ 10 V_{DC}, 0 ~ 20 mA, 4 ~ 20 mA
 - Isolation Voltage 2,000 V_{DC}
 - Sampling Rate 10 samples/sec.
 - Input Impedance 20 MΩ
 - Bandwidth 13.1 Hz @ 50 Hz
15.72 Hz @ 60 Hz
 - Accuracy ±0.1 % or better
 - Zero Drift ±6 μV/° C
 - Span Drift ±25 ppm/° C
 - CMR @ 50/60 Hz 92 dB min.
- **Analog Output**
 - Channels 2
 - Effective Resolution 12-bit
 - Output Range 0 ~ 10 V_{DC}, 4 ~ 20 mA, 0 ~ 20 mA
 - Drive Voltage 15 V_{DC} (for current output)
 - Isolation Voltage 2,000 V_{DC}
 - Accuracy 0.05% of FSR
 - Drift ±50 ppm/° C
- **Digital Inputs**
 - Channels 2
 - Dry Contact: logic level 0: close to GND
logic level 1: open
 - Wet Contact: Logic level 0: +3Vmax
Logic level 1: +10 V to 30 V_{DC}
- **Digital Outputs**
 - Channels 2
 - Open Collector to 30 V
100 mA max. load
 - Power Consumption 4 W (typical)

Ordering Information

- **ADAM-6022** Dual-loop PID Controller

Dimensions

Unit: mm



Common Specifications

Communication

- Ethernet Interface (RJ-45)
- Speeds 10/100 Mbps
- Max. communication distance 333 feet (100 m), can be extended by using switch hub
- Power and communication LED indicator
- TCP/IP, UDP, MODBUS/TCP supported
- Online module insertion and removal

Power Requirements

- Unregulated +10 ~ +30 V_{DC}
- Protected against power reversal

Mechanical

- Case ABS with captive mounting hardware

Plug-in Screw

Accepts 0.5 mm² to 2.5 mm², 1 - #12 or 2- #22 AWG

Terminal Block

Environment

- Operating Temperature -10 ~ 70° C (14 ~ 158° F)
- EMI Meets FCC Class A
- Storage Temperature -20 ~ -80° C (-13 ~ 185° F)
- Humidity 5 ~ 95%, non-condensing

Software Ordering Information

- PCLS-OPC/MTP Modbus/TCP OPC Server
- AStudio-WNT/DEV Astudio-WNI/PRO Web-enabled HMI/SCADA Software